

Aeration Blower Enclosure and diffuser bar Specification

Product Code: GGBLCEN240

Description: GG Blower Enclosure complete Kit 240v

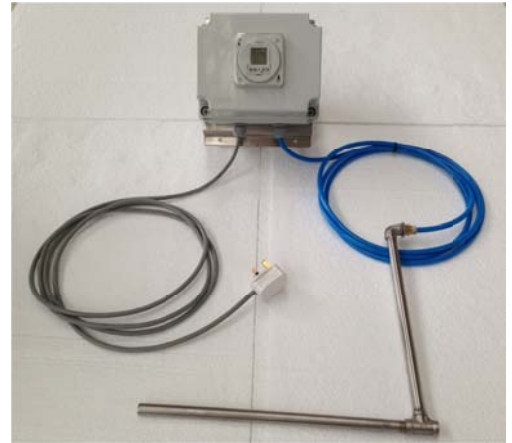
Compressor

Compressor Make: Guangdong Hailea Group Co Ltd
Model ACO-308

Power rating: 22w, 240v, 50Hz (supplied with 3 pin fused plug.

Air Output: 45L/min

Pressure: >0.018 Mpa



Timer:

Make: Grässlin by Intermatic

Model FM1D/20, 20 memory time switches

- 24-Hour or 7-Day applications
- 20 setpoint programs
- 3 preset adjustable block programs
- Easy-to-follow menu driven programming
- Manual override with status indication
- Battery backup
- Flush Mounted on enclosure
- Large LCD
- 240VAC, 50/60Hz

Enclosure type:

Grey composite

Rating: IP65

190mm x 155mm x 145mm

Mounted on Stainless steel (Grade 304) wall mounting:

Total depth (front from timer cover to mounting wall interface, including enclosure: 200mm)

Diffuser bar:

Stainless steel: grade 316

260 mm drop bar x 250mm diffuser bar x 20mm \varnothing

Air fed via 3m polyurethane flexible hose (supplied)



Timer/Blower operation**During skimming Operation**

Timer to be set before the skimming cycle to operate for 2 minutes,
During the heating cycle only 1 to 2 min. To be avoided during skimming as it can increase water recovery.

Timer will give you up to ten inputs for usage of the blower.

During the 24 hr day (outside of skimming operation)

2 min every 4 or 6 hours, to reduce smell typical of the flour and solidification of the surface.

WARNING: Settings in excess of 5 minutes are to be avoided as it may force smell to escape from the wiper blade slot.